

# Care - the road to the future

IdM a prerequisite

# X Background

- azM
  - ± 6000 employees
  - ± 850 beds



# X Problem definition



- The future of care requires rigorous (ICT) steps...
  - Request of innovative services
  - Repositioning of the patient

Demand for a solid foundation



# Problem definition

**X** Transition in position of the patient



- From supply-oriented care to patient-oriented care
- From patient to client
- azM, Care information broker for the EU region



# Problem definition

azM: Care Information Broker



## ■ azM: Care Information Broker

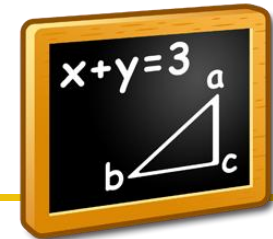
### ■ *Philosophy azM:*

- first internally,
- then externally (Electronic Patient File),
- then Care Information Broker.

→ Identity & Access Management is a prerequisite !



# X Case



## Drivers for IAM:

- Internal control: who, what, when.
- Self service based, innovative services
- Support for administrative processes
- Support for care processes
- Conditional for implementation of EPF
- Conditional for 'Cross border Care Services'.
- Realization of Care Information Broker



# X Case: Internal Control

---

- Identity Lifecycle
- Autorisation management:
  - Automatic assignment of roles / permissions based on the role and function of a person.
  - Manual assignment of roles / permissions, includes approval of manager, application owner and/or security officer.
  - Delegate tasks
- Audit & Control
  - Active SOD
  - Who did what, when



# X Case: Innovative Services

---

- Shared service portal for:
  - Request access, software, hardware, etc.
  - Delegate tasks
- Interaction with:
  - Financial system
  - Stock system
  - CMDB
- Innovation: Identity management for systems, software, hardware, etc.



# X Case: Federation Services

---

- Service provider for:
  - EPD
  - Collaboration
- Identity Provider:
  - azM
  - DigiD
  - PKI Overheid
- Pre-requisite:
  - Internal IDM
  - Information Classification
  - Service Provider Infrastructure



# X Case: Care Information Broker

---

- Trust modeling
- Law Enforcement
- Federation / confederations
- Information Classification
- Internal IAM
- External IAM
- Audit & Control

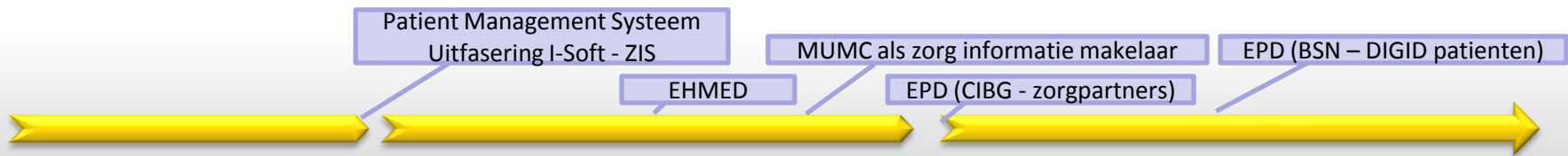


# IMPLEMENTATION STRATEGY

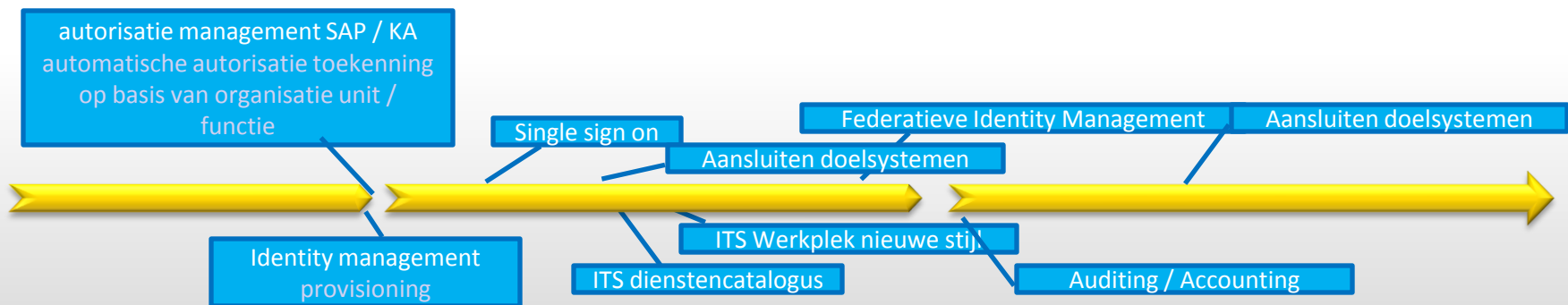


# Implementation Strategy

## X Roadmap

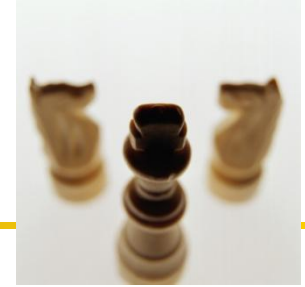


Business roadmap



IDM roadmap

# X Implementation Strategy



- SAP ERP implementation leading
  - Organisation and Employee information
  - ARIS: administration of primary processes, role modelling and relations.
    - IDM following
      - Office automation following
      - Other systems following

BUT...



# X Implementation Strategy



- Implementation SAP ERP, SRM versus implementation IDM

Chicken – Egg issue

- Seems like a game of Chess... however with the same *business* targets...

# X IAM program



## Scope:

- Identity Management (employees and externals)
- Access Control (internal systems)
- ITS Services, Workflow, Portal (internal)
- Single Sign On (internal)
- Federative Identity Management (external)
- Connecting target systems
- ...

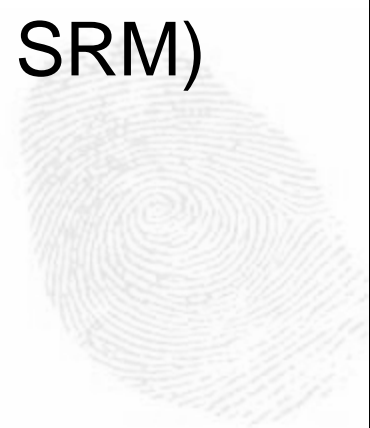


# IAM program

## Fase - 1

---

- Authorisation management & provisioning
  - Implementation of IdM fundament
  - SAP HR as source
  - ARIS as source
  - AD as target (incl. SAP ERP and SRM)



# IAM program

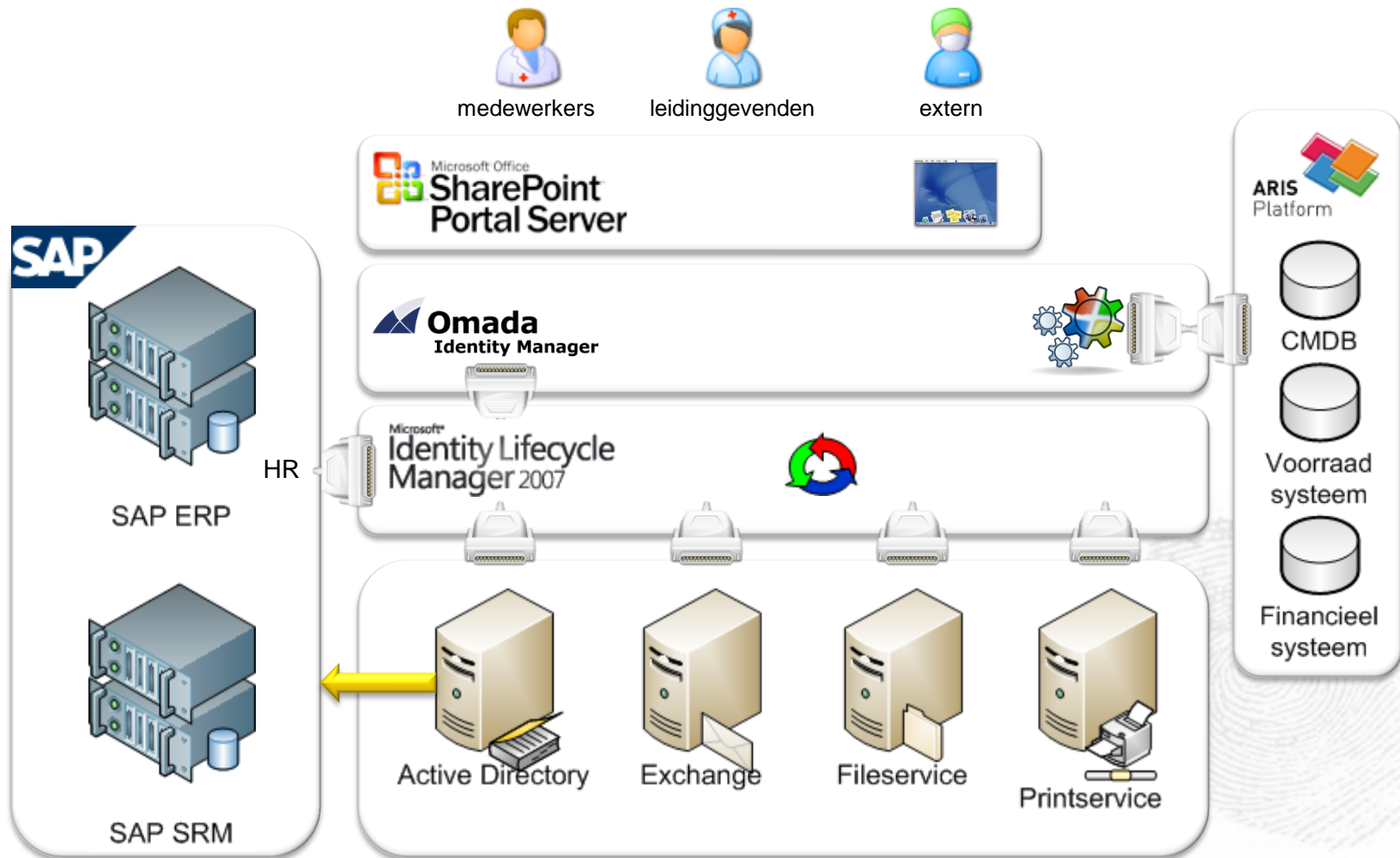
## Fase - 2

- ITS services (Services Portal) & Webshop
  - Extension on fase 1 fundament
  - CMDB as source for computer systems related information
  - AD as target
    - SMS for software distribution



# IAM program

## Product Architecture (IDM & AM)



# X Finally

---

- Idm is a pre-req in growth of azM as Care Information Broker
  - Philosophy: *First internal organization then next steps (like EPD).*
  - SAP implementation is leading for IDM implementation
  
- The standard open doors.



# X Questions

---



# X Thank you



Traxion België  
Schalienthoevedreef 20e  
2800 Mechelen  
t. +32 15 285070  
[www.traxion.com](http://www.traxion.com)

